

A major purpose of the Technical Information Center is to provide the broadest dissemination possible of information contained in DOE's Research and Development Reports to business, industry, the academic community, and federal, state and local governments.

Although a small portion of this report is not reproducible, it is being made available to expedite the availability of information on the research discussed herein.

Los Alamos National Laboratory is operated by the University of California for the United States Department of Energy under contract W-7405-ENG-36

LA-UR--85-242

DE85 006712

TITLE: SHIFTED HOMOLOGOUS RELATIONSHIPS BETWEEN THE TRANSPLUTONIUM AND EARLY RARE-EARTH METALS

AUTHOR(S): John W. Ward

reproduced from ...
public copy to permit the broadest possible availability.

SUBMITTED TO: Symposium on Americium and Curium Chemistry and Technology, PAC-Chem. Conference, Honolulu, HI, December 1984.

DISCLAIMER

This report was prepared as an account of work sponsored by an agency of the United States Government. Neither the United States Government nor any agency thereof, nor any of their employees, makes any warranty, express or implied, or assumes any legal liability or responsibility for the accuracy, completeness, or usefulness of any information, apparatus, product, or process disclosed, or represents that its use would not infringe privately owned rights. Reference herein to any specific commercial product, process, or service by trade name, trademark, manufacturer, or otherwise does not necessarily constitute or imply its endorsement, recommendation, or favoring by the United States Government or any agency thereof. The views and opinions of authors expressed herein do not necessarily state or reflect those of the United States Government or any agency thereof.

MASTER

By acceptance of this article the publisher recognizes that the U.S. Government retains a nonexclusive, royalty-free license to publish or reproduce the published form of this contribution or to allow others to do so, for U.S. Government purposes.

The Los Alamos National Laboratory requests that the publisher identify this article as work performed under the auspices of the U.S. Department of Energy.

DISTRIBUTION OF THIS DOCUMENT IS UNLIMITED

Los Alamos Los Alamos National Laboratory
Los Alamos, New Mexico 87545

SHIFTED HOMOLOGOUS RELATIONSHIPS BETWEEN
THE TRANSPLUTONIUM AND EARLY RARE-EARTH METALS*

John W. Ward

Materials Science and Technology Division

Los Alamos National Laboratory, Los Alamos, NM 87544

ABSTRACT

The physico-chemical properties of the late actinide metals americium through einsteinium are compared with their rare-earth counterparts. Localization of the 5f electrons beginning at americium signals the appearance of true rare-earth-like properties, but the homologous relationship is shifted to place americium below praseodymium, einsteinium then below europium. The comparison of crystal structure, phase transitions, vapor pressures and heats of vaporization reveals remarkable similarities, especially for Sm-Cf and Eu-Es, where the stability of the divalent metal becomes established and divalent chemistry then follows.

There is of course a major perturbation at the half-filled shell at curium, and it may be argued that americium is the anomaly in the so-called second rare-earth series. However, the response of americium, berkelium and californium under pressure reveals the true perturbation to be a thermodynamic one, occurring at curium.

The onset of 5f electron localization in the actinides is probably first seen in the higher temperature phases of plutonium, particularly the fcc delta phase, with a metallic radius of 1.64Å and a rare-earth-like X-ray adsorption-emission response.¹ Nevertheless, no magnetism is observed, and the radius is still small compared to the rare-earth metals. 5f bonding returns with vengeance in the epsilon and liquid phases, producing (as with neptunium) a very low melting point and a liquid with extremely high viscosity and high boiling point.

The mystery continues with americium, where a major localization and f-band narrowing occurs but magnetism is again quenched by the "magic" 5f⁶ electronic configuration; this peculiar non-magnetic ground-state also allows americium to become superconducting, like

*Worked performed under the auspices of the U.S. Department of Energy

lanthanum.² Chemically americium is clearly a trivalent metal. The divalent state is only stabilized by a large ligand such as I^- ; tetravalency occurs with strong oxidizing agents (O_2, F_2) because the 5f electrons, though localized, are very close ($<2eV$) to the Fermi level. Crystal structures are like those of the early rare-earths - dhcp at room temperature and fcc at higher temperatures. High-pressures³ transform the lattice first to an fcc structure (as do the rare-earths), then to an exotic double body-centered monoclinic phase, and then finally to an α -uranium-type structure in the range 15-20 GPa, again showing the proximity of the 5f electrons to the Fermi level.

The dhcp room temperature and fcc-high temperatures are also found for cerium, and also the elements berkelium and californium, in marked contrast to the supposed homologs directly above these elements in the periodic table. A suggestion first noted by Johansson⁴ shifts the homologous relationship to place americium below praseodymium, then comparing the two series as chemical and structural homologs. This comparison is illustrated in Table 1. The f-bonded early actinides are grouped for convenience under plutonium, which becomes the homolog for (the f-bonded collapsed α -phase of) cerium. It should be noted that cerium is often used as a stand-in for plutonium, where radioactive contamination must be avoided.

Americium then becomes the homolog for praseodymium, as noted above. Both metals can be oxidized to the dioxide, due to the proximity of the f-energies to the Fermi level. A heat of vaporization for Pr = 85.0 kcal/mol may be compared with 67.9 kcal/mol for Am, as measured by Ward and coworkers (5,6) on both the ^{241}Am and ^{243}Am isotopes; these data are shown in Fig. 1. A long-standing controversy between the measured and theoretical values for the heat of vaporization has recently been resolved by a new spectroscopic value for the lowest level of the f^6d^2 Am I configuration, thus finally bringing the theoretical calculations into harmony with experiment. Various theoretical treatments^{4,7-10} have had considerable success in predicting the cohesive energies (\sim heat of vaporization) for the rare-earths, failing for the early actinides because of no viable model for the itinerant and bonding

5f-electrons. These correlations are based on the spectroscopic values for the gas and the heat of solution; it might therefore be expected that reasonable estimates would be made for the elements americium and beyond, where f-bonding no longer is in the picture. This indeed turns out to be true, with the resolution of the americium calculation just discussed.

It can be seen immediately that a major perturbation in the homologous relationship in Table 1 occurs at curium, because of the half-filled shell effect. Is curium like neodymium or gadolinium? Crystal-structure-wise the former is true; in terms of a heat of vaporization ($Cm = 92.2$ kcal/mol, $Gd = 95.0$ kcal/mol, $Nd = 73.3$ kcal/mol) the latter seems to be true. However, the "problem" is not really a problem at all; the argument is simply a thermodynamic one, since the half-filled shell stabilizes the trivalent Cm(Gd) gas. In terms of solid-state properties, the homologous relationship remains Cm-Nd.

For the elements beyond plutonium, measurements of the heat capacity are difficult-to-impossible, due to the intense radioactivity and/or vanishingly-small quantities for experiment. Ward and Hill¹¹ have established a correlation relating the crystal entropy S_{298}° to metallic radius, atomic weight, magnetic properties and electronic structure. This correlation permits estimation of reliable entropy values for metals for which no data are available, based on comparison with a closely-similar metal for which there are measured data. The early actinides cannot be assessed by this correlation, because there is no model (as for the theoretical calculation) to account for the complex 5f-electron bonding. However, success is expected and realized for the metals americium and beyond. The estimated value for the correlation for americium of 13.2 cal./mol/K has been precisely confirmed recently by experiments on the ²⁴³Am isotope.¹²

Noteworthy is the high change of entropy (4.13 cal/K/mol) upon vaporization of Am from the trivalent non-magnetic solid to the divalent magnetic gas. It should be noted that all of the actinide gases are fully magnetic, like the rare-earths, as shown in Fig. 2. Perhaps this should be obvious, but interesting is the fact that simple subtraction

of the magnetic entropies results in a good non-magnetic baseline, except for curium, where there are many low-lying excited states.

The importance of the crystal entropy lies in the fact that the S_{298}° value is the basis point for the free-energy functions for both the solid and gas. From a reasonably accurate estimate for the solid entropy, the gaseous spectroscopic data and precise vapor pressure measurements, it is possible to calculate all the thermodynamic functions for the metal up to the highest temperatures of measurement. These values have been recently tabulated in the Metals Chapter of the "Handbook for the Physics and Chemistry of the Actinides".¹³

Unfortunately there exist as yet no data for the rare-earth element promethium, so a comparison with berkelium cannot easily be made. However, it is expected on the basis of the regularity seen elsewhere that the comparison will be excellent. In the measurement of the vapor pressure of pure berkelium-249 metal¹⁴ neodymium was used as the comparative element for the entropy correlation, correcting of course for the proper magnetic entropies, and the fit was excellent. The measured heat of vaporization of 74.1 kcal/mol may be compared with that for neodymium of 78.3 kcal/mol, with the expectation that the value for promethium, when finally measured, will be lower.

The comparison at samarium/californium is especially revealing. Incipient stabilization of the divalent state is seen in both metals, with divalent chemical compounds easily formed. The surface of samarium metal has been shown to be divalent¹⁵, and there was some question in the early stages of californium metal studies whether the metal was divalent. However, the thermodynamic data¹⁶ clearly establish californium to be a trivalent metal but with a heat of vaporization of only 46.9 kcal/mol (as compared to 49.4 kcal/mol for samarium) and with a vapor pressure midway between that for samarium and europium, as shown in Fig. 3.

Recent Henry's-Law vaporization studies of einsteinium-253 dissolved in ytterbium show^{9,17} the metal to be clearly divalent, with a heat of vaporization of only 31.8 kcal/mol (similar to strontium), thus completing the homologous miniseries by analogy to divalent europium.

Some comparative properties of the early lanthanides and late actinides are summarized in Table 2. Trends in cohesive energies are illustrated by the measured heats of vaporization of the actinide metals, plotted in Fig. 4.

Beyond einsteinium there is no corresponding half-filled shell in the actinide series, and the divalent state will continue to be the preferred electronic configuration for the metals fermium and beyond. At the moment, half-lives are too short and quantities too small for meaningful bulk measurements beyond einsteinium.

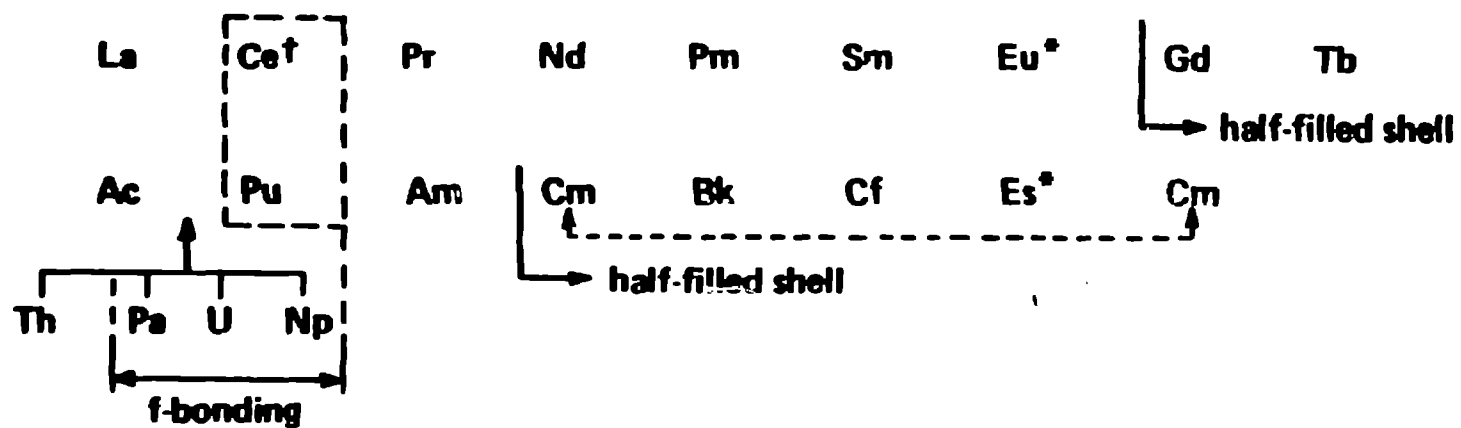
Thus in summary, a shifted homologous relationship exists for the transplutonium actinides, resulting in the miniseries Am-Es corresponding to the series Pr-Eu. The half-filled shell at Cm introduces a thermodynamic complication which is however not reflected in the condensed phase properties of this element.

REFERENCES

1. Bonnelle, C., Structure and Bonding (Berlin) 31 (1976) 23.
2. Smith, J. L., Haire, P. G., Science 200 (1978) 535.
3. Roof, R. B., Zeit. fur Kristall. 158 (1982) 307.
4. Johansson, B., Phys. Rev. B 11 (1975) 2836.
5. Ward, J. W., Müller, W., Kramer, G. J., Transplutonium 1975, Eds W. Muller and R. Lindner, North-Holland, Amsterdam/American Elsevier, New York (1976) 161.
6. Ward, J. W., Kleinschmidt, P. D., J. Chem. Phys. 71 (1979) 3920.
7. Nugent, L., Burnett, J. L., Morss, L. A., J. Chem. Thermo, 5 (1973) 665.
8. Samhoun, K., Ph.D. Thesis, Université de Paris-Sud, Centre d'Orsay, Ser. A, No. 1727, 1976.
9. Kleinschmidt, P. D., Ward, J. W., Matlack, G. M., Haire, P. G., High Temperature Science (1984) - to be published.
10. Johansson, B., J. Less-Commons Metals 100 (1984) - to be published.

11. Ward, J. W., Hill, H. H., Heavy Element Properties, Eds. W. Müller & H. Blank, North-Holland, Amsterdam/American Elsevier, New York (1976) 65.
12. Müller W., Schenkel, L., Schmidt, H. E., Spirlet, J. C., McElroy, D. L., Hall, R. O. A., Mortimer, M. J., J. Low-Temp. Phys. 30, 561.
13. Ward, J. W., Kleinschmidt, P. D., Peterson, D. E., Chapter "Thermochemical Properties of the Actinide Elements and Selected Actinide-Noble Metal Intermetallics," in the Handbook of the Physics and Chemistry of the Actinides, Eds. A. J. Freeman, G. Lander and C. Keller, North-Holland, Amsterdam (1984) - to be published.
14. Ward, J. W., Kleinschmidt, P. D., Haire, R. G., J. Chem. Phys. 77 (1982) 1464.
15. Allen, J. W., Johansson, L., Bauer, R. S., Lindau, I., Hagstrom, S. B. A., Phys. Rev. Let. 41 (1978) 1499.
16. Ward, J. W., Kleinschmidt, P. D., Haire, R. G., J. de Physique (Paris) 40 (1979) C4-233.
17. Kleinschmidt, P. D., Ward, J. W., Matlack, G. M., Haire, R. G., J. Chem. Phys. 81 (1984) 473 .

**COMPARATIVE PHYSICOCHEMISTRY OF LANTHANIDES AND ACTINIDES
(THE "JOHANSSON SHIFT")**



†f-bonding in the collapsed phase

*divalent

Table 2. Comparative Values for the Actinides Am-Es and Lanthanides Pr-Eu

Metal	Crystal	M.P.	B. P.	C_p^o	S_{298}^o	ΔH_{298}^c	Chemistry
Pair(s)	Phases	(K)	(298K)	(Cal/K/Mol)	(Cal/K/mol)	(kcal/Mol)	
Am	dhcp, fcc	1449	~2220	5.97	13.20	67.9	III [II, IV]
Pr	dhcp, fcc	1204	3785	6.56	17.67	85.0	III [IV]
Cm	dhcp, fcc	1618	3383	6 ³	17.20 ^a	92.2	III [IV]
Nd	dhcp, fcc	1289	3341	()	16.99	73.3	III [IV]
(Gd)	(hcp, bcc)	(1585)	(3539)	(8.86)	(16.24)	(95.0)	(III)
Bk	dhcp, fcc	1323	2900	6.24 ^a	18.68 ^a	74.1	III
Pm	dhcp, fcc(?)	~1350	2730(?)	-	-	?	III
Cf	dhcp, fcc	1173	1745	6.70 ^a	19.25 ^a	46.9	III, II
Sm	α -Sm (dhcp under pressure)	1345	2064	7.06	16.61	49.4	III, II
Es	fcc	1133	1241	6.39 ^a	21.38 ^a	31.8	II
Eu	bcc	1090	1870	6.48	19.31	41.9	II

[] = other possible valence states

^afrom the Entropy correlation, Ward & Hill (11)

Figure Captions

1. Vapor pressure data for americium. The heavier line represents 37 data points taken with the 241 isotope (Ref. 5); extent of range is indicated by small arrows. Data points and the lighter line represent values with the 243 isotope, extending into the liquid range: ● Los Alamos data; ■ Karlsruhe data (Ref. 6).
2. Comparison of gaseous entropies for the lanthanides and actinides at 298K and 1400K. o: divalent (d^0) curve for the lanthanides; ● trivalent (d^1) gases; ♡ fully magnetic actinide gas; ♣ non-magnetic portion of entropy for each element.
3. Vapor pressure of solid californium, compared to data for samarium and europium (Ref. 16). Target data o and mass spectrometric data were taken, stately with a 2 mg sample of pure ^{249}Cf (tailoff for the highest points was due to incipient sample depletion).
4. Comparative plot of the cohesive energies of the actinide metals, in kJ/mol (left ordinate) or kcal/mol (right ordinate). Open data point at Pa represents a still-unresolved uncertainty for this element.

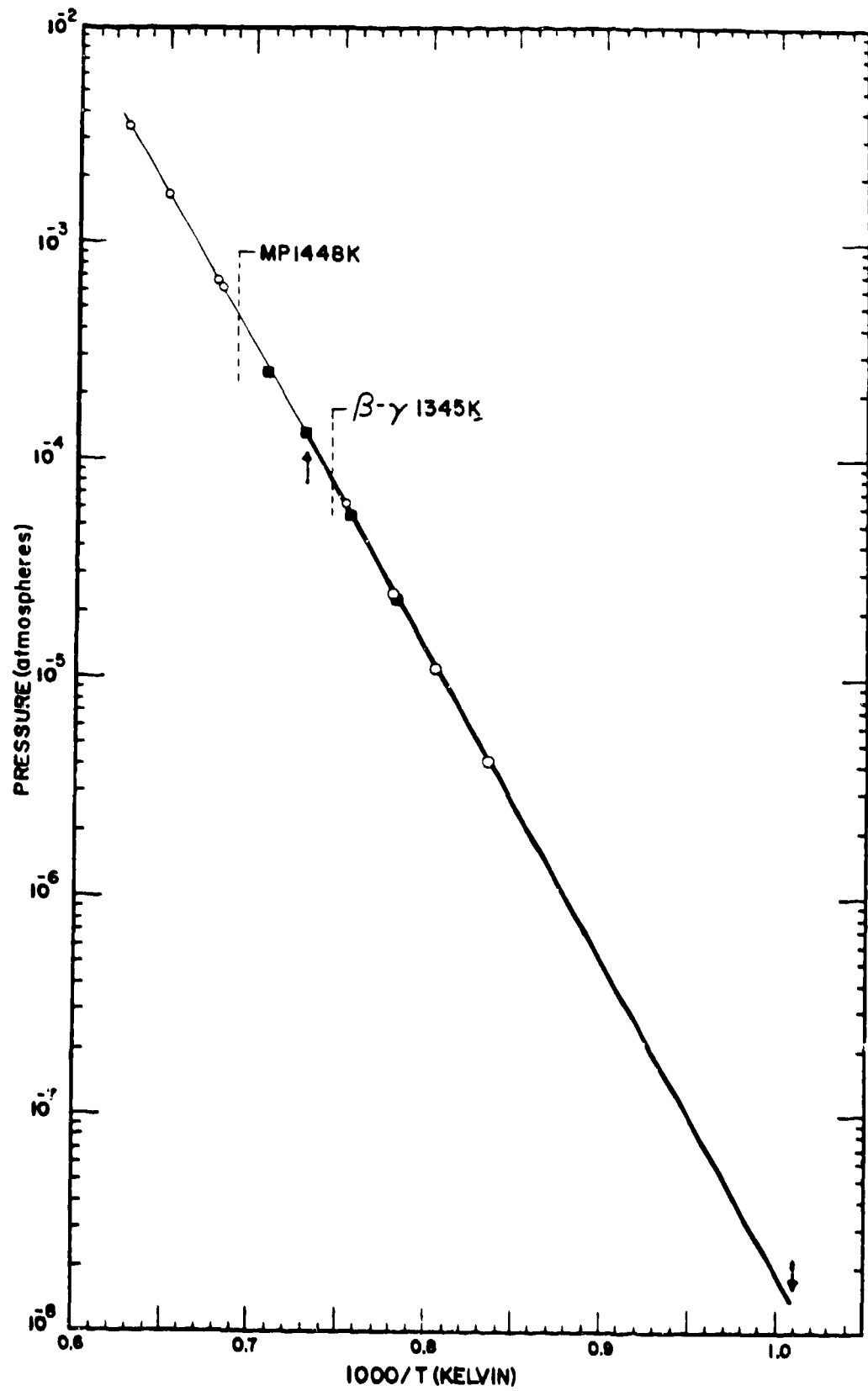
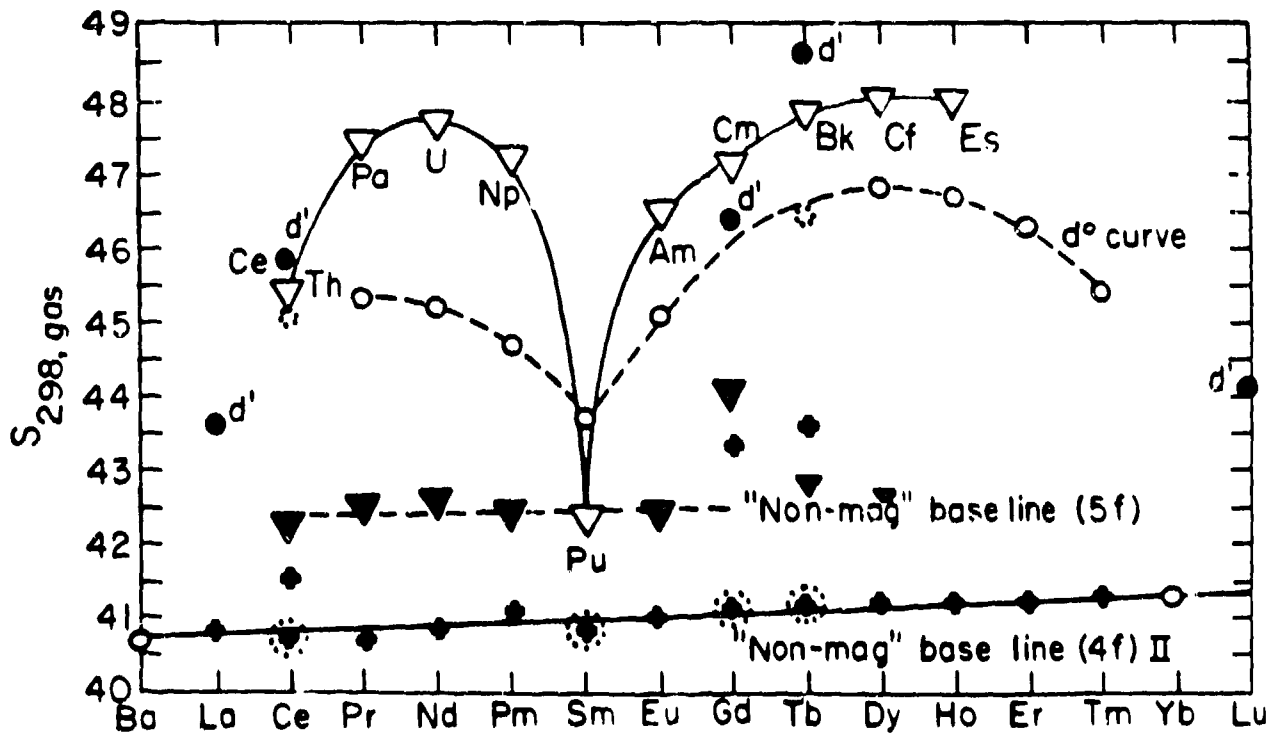
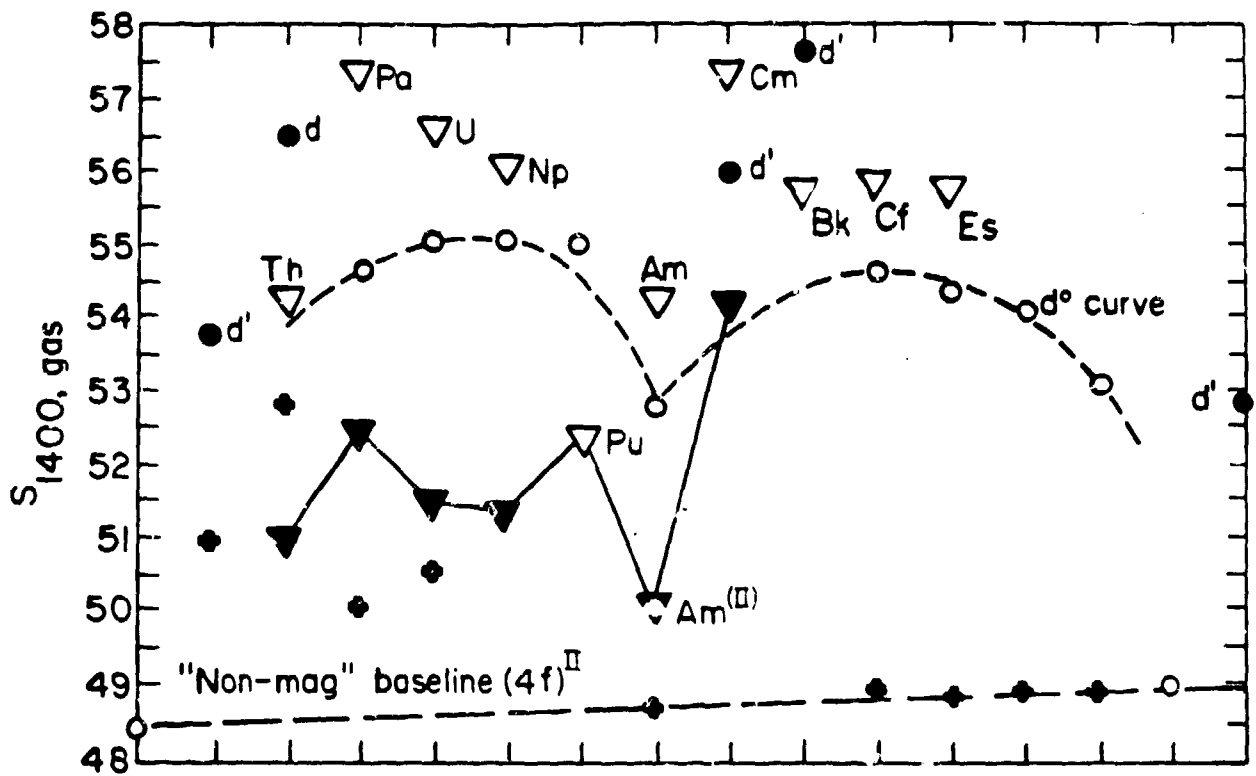


Fig 1



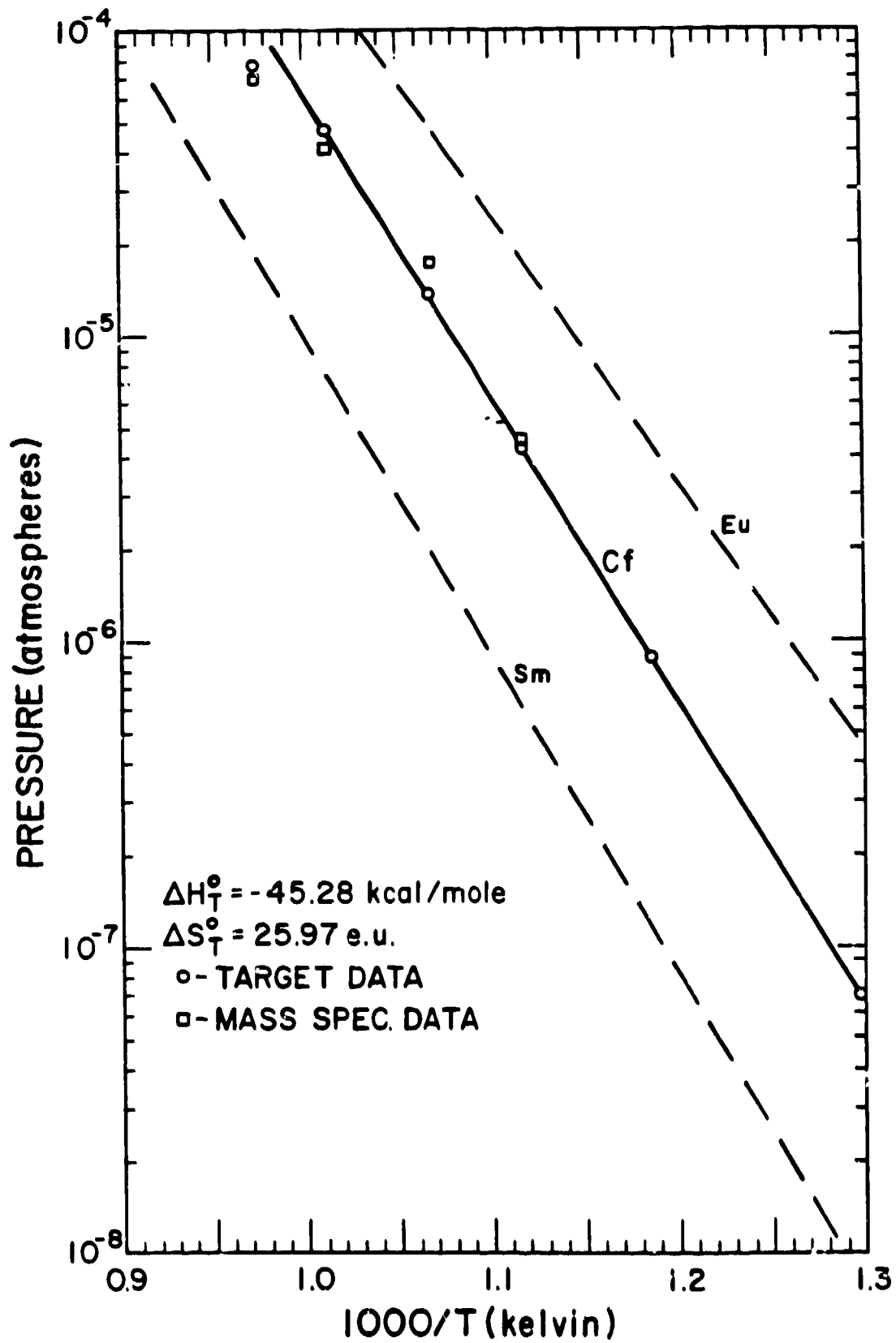


Fig. 3

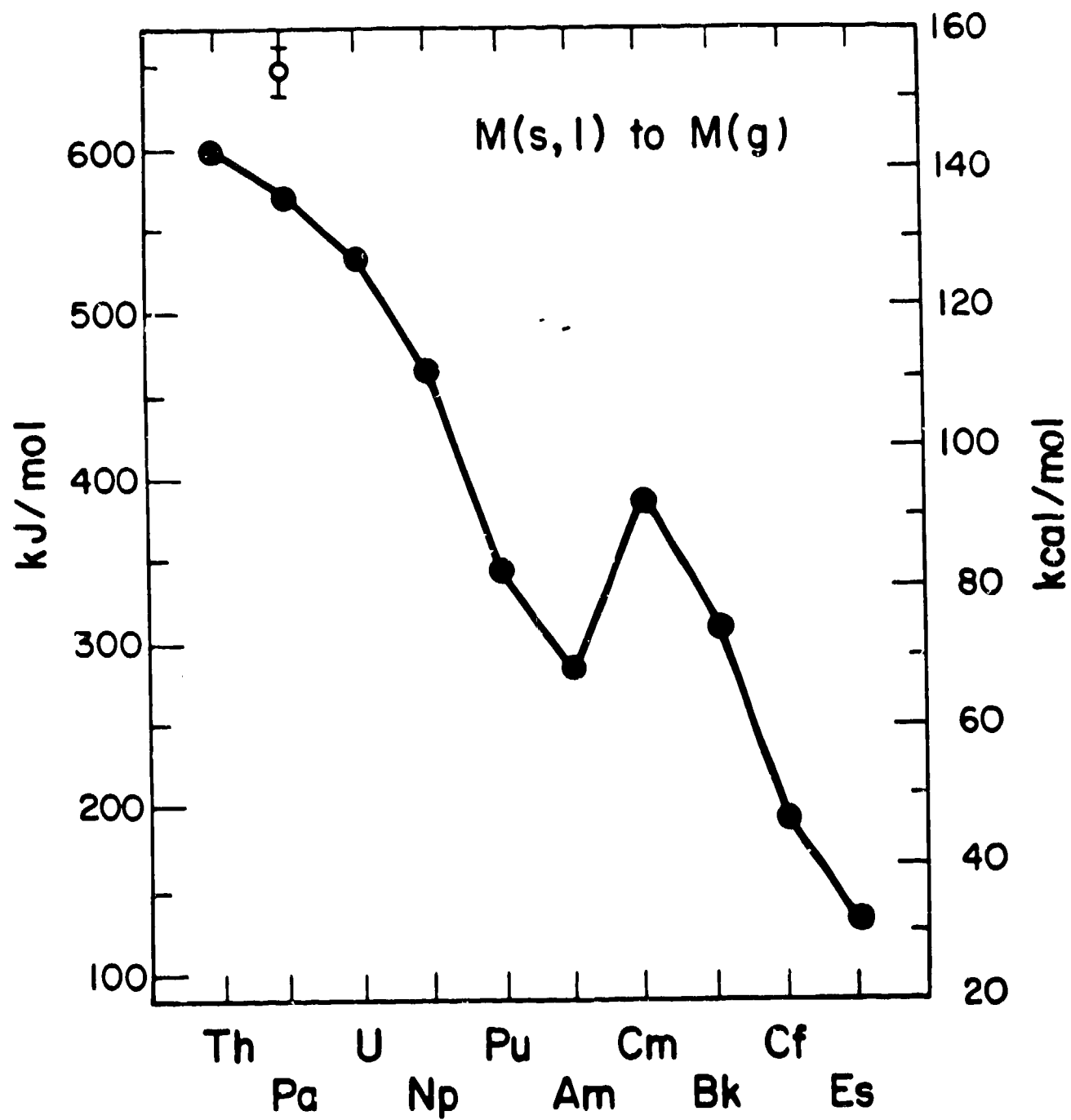


Fig 4

